

Thermal Fire Pipe Sleeve

Trade Name: ASTRO THERMAL FIRE PS

FEATURES

**Thermal Fire Pipe Sleeve
Tested to BS476: Part 20 & 22**

2 Hours plus Fire Rated

Excellent Acoustic Insulation

Maintains thermal insulation for the pipe

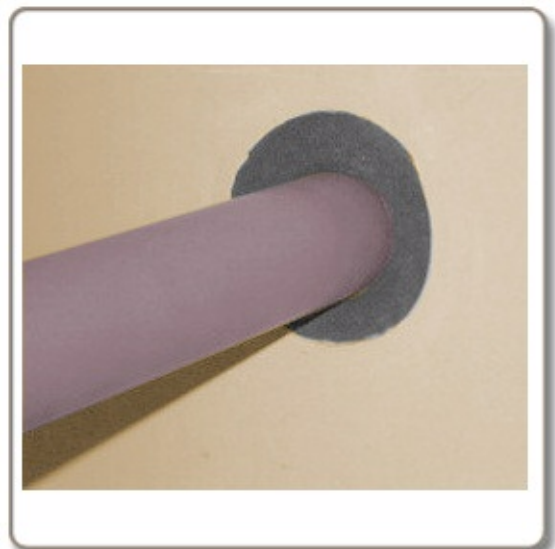
**For use through a wide range of fire
partition walls and floors.**

**Suitable for a wide range of plastic, copper
and mild steel pipes.**

Allows for thermal movement of pipe

NHBC Type Approval.

**NHBC
TYPE APPROVAL**



Description

A high percentage of the steel, copper and plastic pipes found in commercial and domestic buildings will penetrate through fire rated constructions such as ceilings, floors and walls. Once a hole is made in a fire rated construction for the passage of pipes or services the integrity of the compartment is compromised.

To solve this problem Astroflame have developed ASTRO Thermal Fire Pipe Sleeve, which reinstates the fire rating

of the construction and prevents fire spreading from one compartment to another. It also protects copper pipes from cement erosion.

The sleeve is a cost effective product for the fire stopping of pipe penetrations, e.g. plumbing pipe and metallic pipes, whilst maintaining similar thermal and acoustic properties as standard mineral fibre insulation. These properties ensure compliance to water bye laws and building regulations for cold and hot water pipes and heating systems.

In a fire situation the sleeve expands to fill the available space between the pipe and the penetration. In the case of plastic pipes the sleeve will crush and close off the pipe forming a solid char and preventing the passage of fire and smoke to the adjacent compartment.

Testing

Tested on the following pipe sizes to BS 476 part 20 for 2 hours

Copper	12mm - 160mm
Mild Steel	22mm - 160mm
Polybutylene	12mm - 28mm
PVC	55mm-160mm

All sleeves have been tested with a 25mm nominal wall thickness. Sleeves have been tested cut both flush to the wall / floor structure and leaving 25mm exposed for connection to standard pipe insulation

The sleeve is simple to install, easy to cut and one sleeve can replace two collars, the sleeve may also be fitted flush to the wall for a clean line solution.

Test Matrix

Pipe Material	Diameter	Blockwork Wall	Solid Floor	Mineral batt	Plasterboard Wall
COPPER	12mm	•	•		•
COPPER	160mm	•	•		•
MILD STEEL	22mm	•	•		•
MILD STEEL	160mm	•	•		•
POLYBUTYLENE	12mm	•	•	•	•
POLYBUTYLENE	28mm	•	•	•	•
PVC	55mm	•	•	•	•
PVC	82mm	•	•	•	•
PVC	110mm	•	•	•	•
PVC	160mm	•	•	•	•

Availability

Length 300mm. Wall thickness 27mm.

2Hr Rated Pipe Sleeves

Diameter	Code	Diameter	Code
17mm	AFIPS17/2E	80mm	AFIPS80/2E

21mm	AFIPS21/2E	89mm	AFIPS89/2E
27mm	AFIPS27/2E	102mm	AFIPS102/2E
34mm	AFIPS34/2E	108mm	AFIPS108/2E
42mm	AFIPS42/2E	114mm	AFIPS114/2E
48mm	AFIPS48/2E	140mm	AFIPS140/2E
54mm	AFIPS54/2E	127mm	AFIPS127/2E
60mm	AFIPS60/2E	159mm	AFIPS159/2E
67mm	AFIPS67/2E	169mm	AFIPS169 /2E
76mm	AFIPS76/2E		

To Order & Specify

Please quote: QTY / TRADENAME / PRODUCT REF / SIZE / RATING
 Typical wording 10 / ASTRO THERMAL FIRE PS / AFIPS17/2E / 17mm / 2 HOUR

Fire Test And Assessment Reports

BS476 part 20/22 2 hour rated at chiltern international fire
 132 minutes integrity and insulation
 NHBC Type Approval.

Health And Safety

See COSHH Sheet.

Installation

Please refer to our install sheet

Related Documents

As part of our policy of ongoing improvements, we reserve the right to modify, alter or change product specifications without giving notice. Product illustrations are representations only. All information contained in this document is provided for guidance only, and as ASTROFLAME FIRESEALS LTD has no control over the installation methods of the products, or of the prevailing site conditions, no warranties expressed or implied are intended to be given as to the actual performance of the products mentioned or referred to, and no liability whatsoever will be accepted for any loss, damage or injury arising from the use of the information given of products mentioned or referred to herein.

The above information to the best of our knowledge is true and accurate and based upon current test data and is supplied for your guidance only. Customers should satisfy themselves to the suitability of the product in its intended use and no guarantee is given or implied since the conditions of actual use are beyond our control. ASTROflame (Fireseals) Ltd, disclaim any liability for loss, damage or other expense arising from the use of information, data or products mentioned or referred to and reserve the right to change any details or specifications without notice.



Unit 8, The IO Centre, Stephenson Road, Segensworth
FAREHAM, ENGLAND PO15 5RU

tel 0800 023 2482
(01329 844500)

fax 0800 023 2483
(01329 844600)

intl

tel +44 1329 844500

fax +44 1329 844600

email