

CI/SfB	(29)	(K2)
CAW P10		
Uniclass JP10:L68114		

## Product Information

### Description

FJ220 Intubatt 3 is supplied pre-configured, ablative coated and factory cured. FJ220 is a rock fibre compressible slab, with an ablative coating to provide a fire and smoke seal. We offer 2 options:

- single coated for horizontal seals
- double coated for vertical seals

### Usage / Purpose

FJ220 is a strong, fast-fit flexible fire seal for curtain wall, slab edge and vertical cladding applications.

The system requires no fixings\* for horizontal gaps up to 200 mm when used against a non-combustible building envelope.

The system can offer an acoustic capability of up to 52 dB (floor slab), limited by substrate.

The application of FS702 Intumastic to all joints and substrates is required to create an effective smoke seal.

For use within floor seals, slab to slab, slab to cladding, slab to blockwork, slab to glazing.

Combustible pipework, steel pipework and cables can be accommodated.

Please consult CPG UK Technical Services for detailed solutions.

### Available Sizes

#### Dimensions

1200 x 600 x 100 mm ±3 mm

### Colour

Off-white (coating)

### Packaging

Supplied individually in clearly identifiable packaging (or in pallet quantities).

### Availability

Direct from Tremco CPG UK Limited (see details on this TDS).

## Usage Guidelines

Always read SDS, pre-application guidance and relevant application detail prior to application. Ensure the latest documents are downloaded prior to every project commencement.

### Preparation

- Clean all abutting surfaces, ensuring loose particles, oils, grease and corrosive material have been removed.

### Typical Installation

- Measure the gap width of the opening to be sealed.
- Cut FJ220 into strips lengthways to the width of opening plus suitable movement allowance (accommodating a maximum size) plus 5 to 10 mm above maximum gap size expected.

- Under compression, install the cut length of FJ220. Where the opening width exceeds 50 mm or the cladding system is non-fire rated, either edge clips or V-lock spikes will be required to provided sufficient support in relation to gap width.

The clip is fixed into the slab side edge of FJ220 and mechanically fixed either to top of floor slab (Z-clip), vertical edge of floor slab (V-lock spike) or L-bracket. 3 fixings are required per 1200 mm, minimum 2 per cut piece (maximum 600 mm else 3 fixings required), at maximum 400 mm (200 mm/600 mm/1000 mm from right hand edge). Please read carefully the Fixing Information paragraph.

- All joints to all substrates, including board to board joints, should be smoke sealed using a 5 mm bead of FS702 Intumastic.

If area is exposed to high humidity or if moisture is expected, we would recommend a suitable PU topcoat applied in accordance to the relevant manufacturer's instructions.

- This should only be used in C1 & C2 environments. For C3, C4, C5, a suitable topcoat will be required.
- When used vertically, a double coated version of FJ220 will be required, with an FS702 smoke seal to both sides.

**Nullifire**  
Smart Protection

# FJ220

## Intubatt 3 Cavity Barrier



### Key Benefits Summary

- Up to 2 hours fire resistance - Tested to both BS 476 20-22 and BS EN 1366-4
- Optifire™ unique traceability identifier
- Cost effective solution
- Easy to install and inspect
- 52 dB acoustic performance



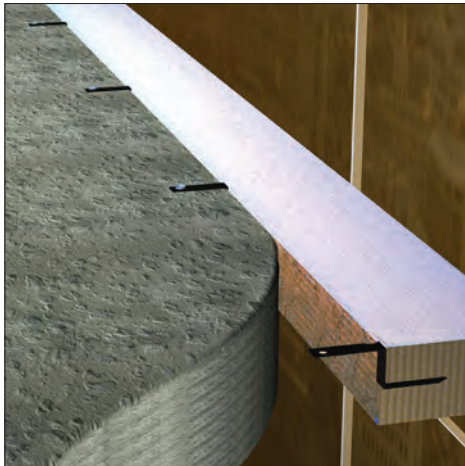
# FJ220

## Intubatt 3 Cavity Barrier

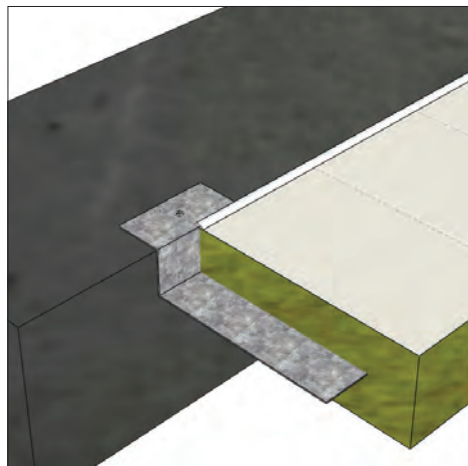
# Nullifire

Smart Protection

### Typical Details



FJ220 with Z-clips on a non-combustible curtain wall



Close up of FJ220 support Z-clip

### Fixing Information

- Z clips are for vertical and horizontal use, in gaps from 200 to 250 mm, or from 0 to 250 mm if the exterior cladding is not fire rated.
- V-lock spikes are for vertical and horizontal use, in gaps from 250 to 400 mm.
- L-brackets are for vertical use only, in gaps from 50 to 250 mm, or from 0 to 250 mm if the exterior cladding is not fire rated.
- All brackets must be cut to permit movement tolerances, and must pass through 75% of the FJ220 width.

### Important Information

- Maximum tested opening is 450 mm width.
- Movement capability is 3 mm to 7 mm
- Can only be cut along the product 1200 mm length.
- The Integrity and Insulation rating of FJ220 may be limited to the capability of the surrounding substrates.

### Storage

Store in dry conditions between -10°C and +70°C. Do not store directly on concrete floors.

### Shelf Life

Unlimited when stored as recommended.

### Health & Safety Precautions

Safety data sheet must be read and understood before use.

### Technical Service

Tremco CPG UK Limited has a team of experienced Technical Sales Representatives who provide assistance in the selection and specification of products. For more detailed information, service and advice, please call Customer Services on 01322 551010.

### Guarantee / Warranty

Tremco CPG UK Limited products are manufactured to rigid standards of quality. Any product which has been applied (a) in accordance with Tremco CPG UK Limited written instructions and (b) in any application recommended by Tremco CPG UK Limited, but which is proved to be defective, will be replaced free of charge.

No liability can be accepted for the information provided in this leaflet although it is published in good faith and believed to be correct.

Tremco CPG UK Limited reserves the right to alter product specifications without prior notice, in line with Company policy of continuous development and improvement.

It is a requirement of the installer to ensure suitability and compatibility of all elements before installation commences and that compliance can be achieved as required.