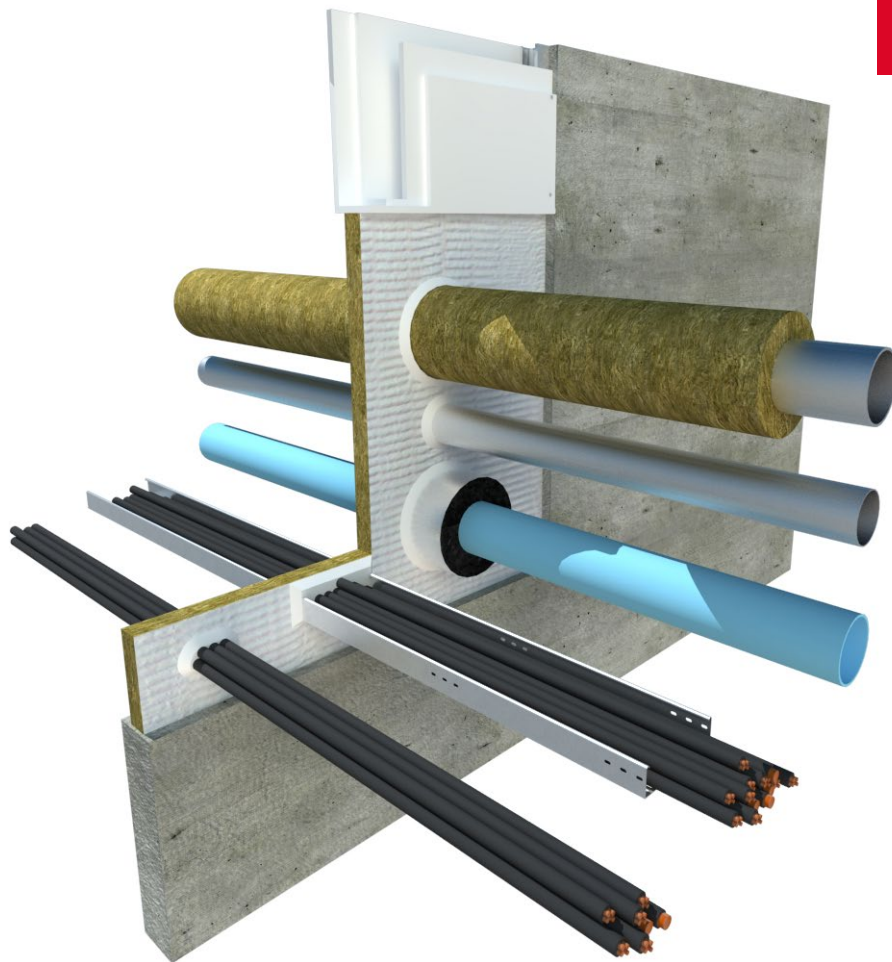


# ROCKWOOL ABLATIVE COATING

Improves the fire resistant properties for  
ROCKWOOL stone wool slabs





## **ROCKWOOL ABLATIVE COATING**

**ROCKWOOL ablative Coating is used to further improve the fire resistant properties of ROCKWOOL stone wool slabs.**

The ablative nature of the coating resists flame spread and forms an insulated char which protects the stone wool slab.



### Advantages

- Suitable for spray or brush application
- Dries to give a sound, flexible white surface finish
- Provides a stable surface for adhesive and fixing sealants

### Description

The ROCKWOOL ablative Coating is water based, ready to use viscous paste which may be brush or spray applied to stone wool slabs. The coating is available in white and in other colours subject to minimum order quantities. The coating may be over painted if desired\* ROCKWOOL Ablative is supplied in 5L tubs.

### Applications

The ablative Coating is available separately to enable site repairs to Ablative Coated Batts, that may have been damaged during installation.

ROCKWOOL Ablative Coated Batt is intended to act as an air seal barrier to reinstate the fire resistance and acoustic performances of concrete floors, masonry walls and dry wall systems when voids have been created for the passage of services. This includes pipes made of plain or stainless steel, cast iron, copper, polypropylene (PP), high density polythene (HDPE ), PVC and ABS along with all sheathed cables up to 80mm and supported cable bundles up to 100mm.

\*Please contact ROCKWOOL Technical Solutions for guidance on suitable paints

## Performance

### Fire performance

ROCKWOOL Ablative Coating is designed to re-seal the surface of Ablative Coated Batt where damage to the ablative coating may have occurred during installation.

ROCKWOOL Ablative Coated Batt has been tested to the dedicated fire resistance standard for penetration seals EN 1366-3. The independently prepared assessment, detailing the full scope of fire performance, is available from the ROCKWOOL Technical Solutions Team. Ablative Coated Batt fire resistance tests were conducted using ROCKWOOL acoustic Intumescent Sealant and/or ROCKWOOL FIREPRO® Glue.

ROCKWOOL Ablative Coating and stone wool slabs may only be used to fire protect service penetrations if supported by independent fire test evidence due to the variants in the density and thicknesses of stone wool slabs available.

## Technical information

### Product information

Property	Description
Cure System	Water Loss
Colour	White
Specific Gravity	1.3 – 1.4
pH	8.5 – 9.2
Flashpoint	None
Solids Content (%w/w)	>58%
Application Temp Range	+10°C to +30°C
Vice Temp Range	-15°C to +75°C
Shelf Life	Up to 12 months when stored in unopened containers under cool dry conditions. AVOID FROST and extremes of temperature
Durability	Up to 15 years when used as recommended

## Installation

ROCKWOOL Ablative Coating can be spray or brush applied.



## Specification clauses

ROCKWOOL Ablative Coating is associated with the following NBS clauses:

P12 Fire Stopping Systems

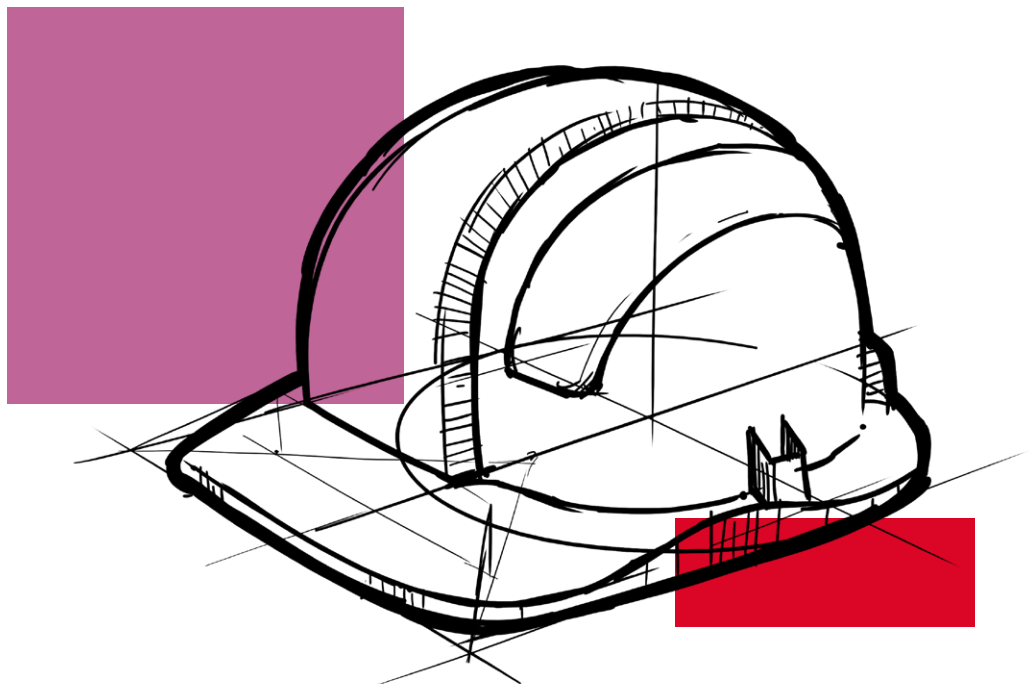
- 325 Boards: Mineral Bound Lightweight
- 360 Mineral Wool Rigid Batts
- 365 Mineral Wool Rigid Batts: Ablative Coated

## Disclaimers

This product should only be utilised for applications as outlined in the relevant ROCKWOOL product datasheet and in accordance with the relevant ROCKWOOL Fire Resistance Testing. Additionally, the product must be installed in accordance with the current ROCKWOOL guidelines. For further information please visit [www.rockwool.co.uk](http://www.rockwool.co.uk) or contact our Technical Solutions Team on 01656 868490.

## Supporting information

For further information relating to any aspect of the FirePro range, please refer to the applicable ROCKWOOL standard details at [www.rockwool.co.uk](http://www.rockwool.co.uk) or contact the ROCKWOOL technical solution team on 01656 868490 or [technical.solutions@rockwool.co.uk](mailto:technical.solutions@rockwool.co.uk).



## Sustainability

As an environmentally conscious company, ROCKWOOL promotes the sustainable production and use of insulation and is committed to a continuous process of environmental improvement.

All ROCKWOOL products provide outstanding thermal protection as well as four added benefits:



**Fire resistance**



**Acoustic comfort**



**Sustainable materials**



**Durability**

## Health & Safety

The safety of ROCKWOOL stone wool is confirmed by current UK and Republic of Ireland health & safety regulations and EU directive 97/69/EC: ROCKWOOL fibres are not classified as a possible human carcinogen.

A Material Safety Data Sheet is available and can be downloaded from [www.rockwool.co.uk](http://www.rockwool.co.uk) to assist in the preparation of risk assessments, as required by the Control of Substances Hazardous to Health Regulations (COSHH).

## Environment

Made from a renewable and plentiful naturally occurring resource, ROCKWOOL insulation saves fuel costs and energy in use and relies on trapped air for its thermal properties.

ROCKWOOL insulation does not contain (and has never contained) gases that have ozone depletion potential (ODP) or global warming potential (GWP).

ROCKWOOL is approximately 97% recyclable. For waste ROCKWOOL material that may be generated during installation or at end of life, we are happy to discuss the individual requirements of contractors and users considering returning these materials to our factory for recycling.



## Interested?

For further information, contact the Technical Solutions Team on 01656 868490 or email [technical.solutions@rockwool.co.uk](mailto:technical.solutions@rockwool.co.uk)

Visit [www.rockwool.co.uk](http://www.rockwool.co.uk) to view our complete range of products and services.

*Copyright ROCKWOOL April 2018.*

**Notes**

April 2018

**ROCKWOOL Limited**

Pencoed  
Bridgend  
CF35 6NY

Tel: 01656 862 621  
info@rockwool.co.uk  
rockwool.co.uk

