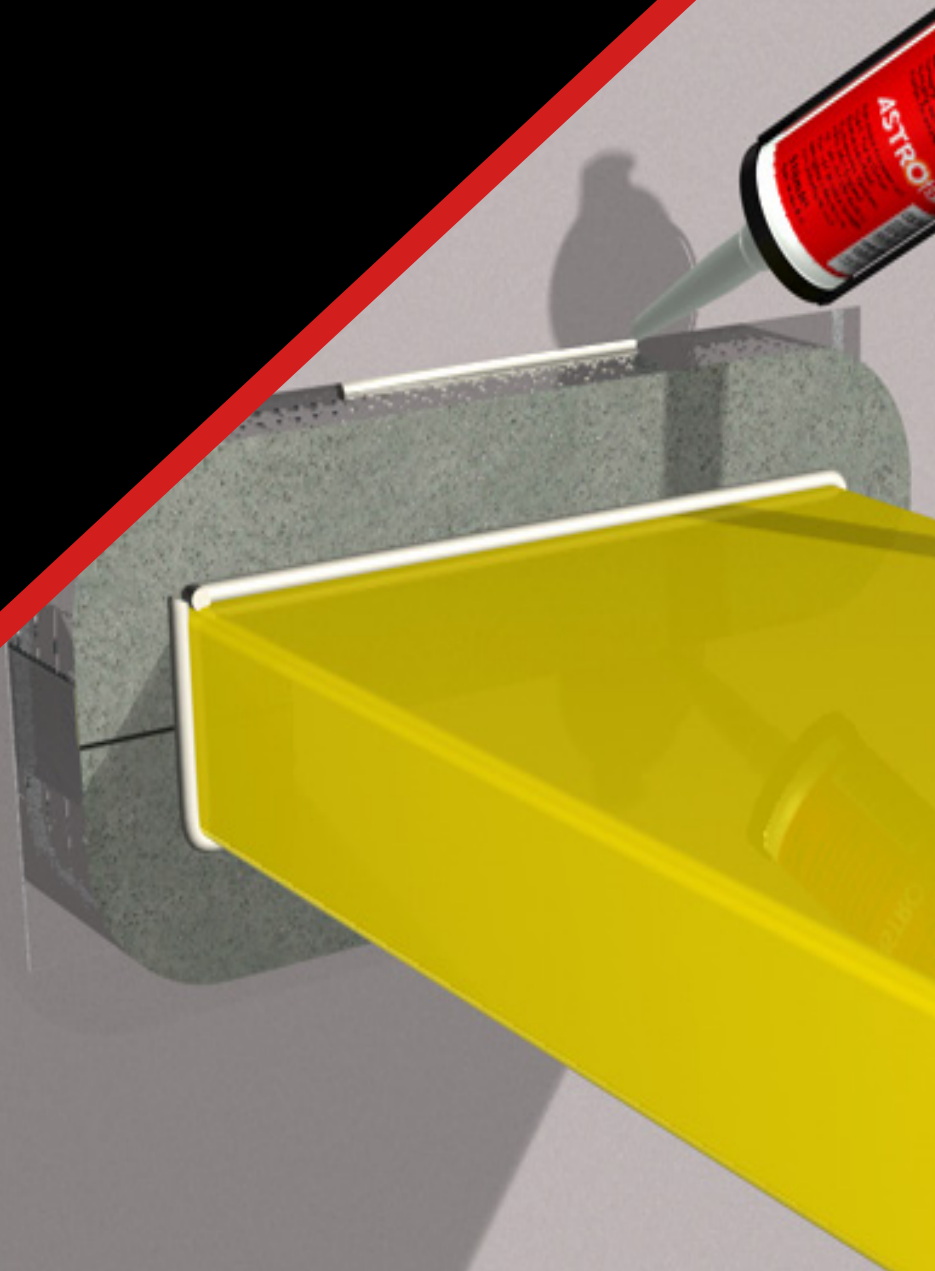


Product Data Sheet

Astro DS Duct Sleeve

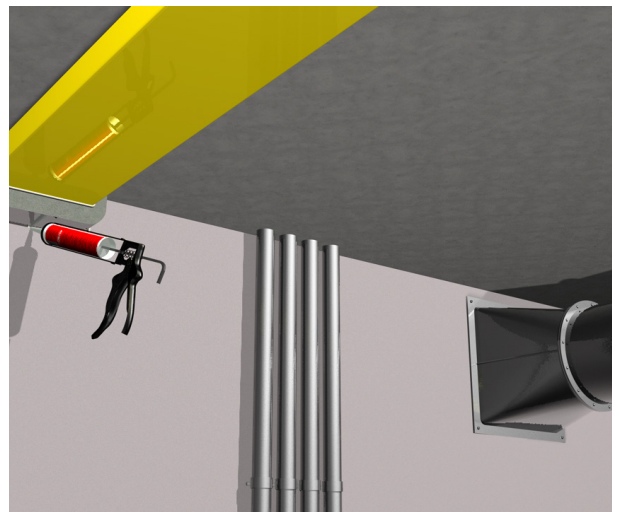
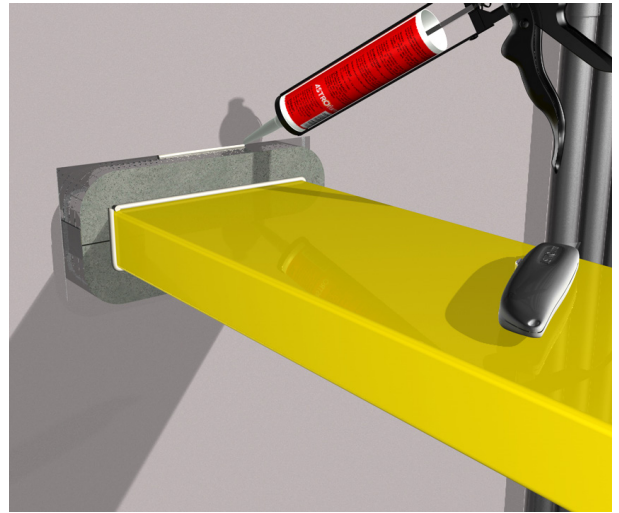
Revision 3 - January 2019



Astro DS Duct Sleeve

CE Marked Intumescent Duct Sleeve

- CE Marked.
- Tested in accordance with BS 476 Parts 20 and 22 : 1987, EN 1366-3 : 2009 and EN 13501-1 : 2007.
- Uncapped / Uncapped (Open | Open) fire tested as required for ventilation systems.
- Suitable for use through a wide range of fire partition walls.
- Offers excellent acoustic insulation
- Maintains the thermal insulation of the duct through the penetration.
- Maintains vapour seal of existing insulation
- Sleeve can be easily fitted only requiring access from one side
- Allows the thermal movement of the duct
- Simple to install without special tools or skills



Product Description

The Astroflame range of Astro DS duct sleeves are intended for use where a ventilation duct passes through a fire rated wall. The sleeve maintains the integrity of the fire rated wall which would otherwise be lost.

In the event of a fire, the advanced Astro DS Duct Sleeve will expand with the heat, crushing the duct and closing off the hole to the fire for at least 2 hours except the 220x90mm version which is rated 60mins.

The Ventilation duct sleeves are available to fit all common sizes of plastic ventilation duct and are suitable for retro fitting with access only required from one side.

 1224
Astroflame Fireseals Ltd Unit 8 The I O Centre Stephenson Road Segensworth, Fareham Hampshire, PO15 5RU 14 1224-CPR-0555
ETA -14/0117 ETAG 026 - Part 2 ASTRO DS DUCT SLEEVE / + "see ETA-14/0117 for relevant characteristics"

Product Availability

Astro DS Duct sleeves are currently available in the following nominal sizes

Product Code	Product Description	Width	Height	Product Length
AFDS110	Astro DS Duct Sleeve	110mm	54mm	180mm
AFDS204	Astro DS Duct Sleeve	204mm	60mm	180mm
AFDS2090	Astro DS Duct Sleeve	220mm	90mm	180mm
AFDS234	Astro DS Duct Sleeve	234mm	29mm	180mm
AFDS308	Astro DS Duct Sleeve	308mm	29mm	180mm
AFDSC100	Astro DS Duct Sleeve Circular	-	100mm Diam.	150mm
AFDSC125	Astro DS Duct Sleeve Circular	-	125mm Diam.	280mm
AFDSC150	Astro DS Duct Sleeve Circular	-	150mm Diam.	180mm

To Order & Specify

Please contact us and quote the following information - Quantity / Product Code / Product Description / Size
 Typical example:- 10 / AFDS110 / Astro DS Duct Sleeve / 110mm x 54mm x 180mm

>> Tel: [01329 844 500](tel:01329844500) or >> Email: sales@astroflame.com

Installation

Please see installation sheet - This can be requested from our sales team T: [01329 844 500](tel:01329844500)
 or E: sales@astroflame.com

Health and Safety

Please see (SDS) Safety Data sheet - This can be requested from our sales team T: [01329 844 500](tel:01329844500)
 or E: sales@astroflame.com

As part of our policy of ongoing improvements, we reserve the right to modify, alter or change product specifications without giving notice. Product illustrations are representations only. All information contained in this document is provided for guidance only, and as ASTROFLAME FIRESEALS LTD has no control over the installation methods of the products, or of the prevailing site conditions, no warranties expressed or implied are intended to be given as to the actual performance of the products mentioned or referred to, and no liability whatsoever will be accepted for any loss, damage or injury arising from the use of the information given of products mentioned or referred to herein.

The above information to the best of our knowledge is true and accurate and based upon current test data and is supplied for your guidance only. Customers should satisfy themselves to the suitability of the product in its intended use and no guarantee is given or implied since the conditions of actual use are beyond our control. ASTROflame (Fireseals) Ltd, disclaim any liability for loss, damage or other expense arising from the use of information, data or products mentioned or referred to and reserve the right to change any details or specifications without notice.