

FIREPRO[®] **MULTI-CABLE** **FIRESTOP**

Firestop solution for multi-cable penetrations



FIREPRO® MULTI-CABLE FIRESTOP

ROCKWOOL Multi-Cable Firestop has been developed to effectively seal cable bunches in electrical trunking and cable trays, where they pass through fire rated walls and floors.

As a compressible fire retardant foam, Multi-Cable Firestop is laminated both sides with a graphite based intumescent polymer and provides up to 4 hours of fire resistance.



Advantages

- Simple to install
- Cables can be easily added/removed
- No de-rating of cables required
- Maintenance free
- Dry installation

Description

Multi-Cable Firestop is compressible fire retardant foam which is laminated both sides with a graphite based intumescent polymer. Multi-Cable Firestop is supplied in sections measuring 60mm wide x 25mm thick x 1000mm long.

Applications

FIREPRO Multi-Cable Firestop has been developed to provide fire protection in all electrical trunking and cable trays at the junction in which these services pass through the compartment wall. FIREPRO Multi-Cable Firestop can be used where electrical services pass through both walls and floors providing up to 4 hours fire resistance.

Performance

Fire performance

Services and support	Surrounding penetration seal	Width of fire stop for each Coated Batt (mm)	Maximum void height (mm) (no. of fire stop plies)	Fire resistance integrity (mins)		
				Seal in masonry wall	Seal in a plaster-board wall	Seal in a concrete floor
Cables (see note 1) secured to appropriately supported perforated steel cable trays/ ladders	Single 60mm ROCKWOOL Ablative Coated Batt	60	25(1)	180		180
	Double 60mm ROCKWOOL Ablative Coated Batt	60	55(2)	120		120
			80(3)	120		n/a
Cables (see note 1) within PVC trunking (max. 100 x 100mm)	Double 60mm ROCKWOOL Ablative Coated Batt with no air gap	60	25(1)	240	60	240
			55(2)	240	60	240
			80(3)	240	60	n/a
			100(1)	240	60	-

Fire Performance - Service Penetration Requirements

1. Suitable for copper cored / PVC sheathed and insulated power cables up to 12mm diameter, secured on perforated trays/ladders or within PVC trunking passing through both walls and floors.
2. Cables and trays must be supported within 500mm on both sides of the seal.
3. Maximum of 3 layers of cables, each layer sealed with the Multi-Cable Fire stop.
4. The aperture width cut from the ablative Coated Batt should match the width of the cable tray or PVC trunking (maximum 100mm).
5. There must be a minimum of 100mm width of ablative Coated Batt between the penetration and the edge of the main aperture within the supporting construction.
6. Maximum depth filled must not exceed 60mm.

Technical Information

Standards and approvals

FIREPRO Multi-Cable Firestop has been tested to BS 476: Part 20: 1987 and can provide up to 4 hours fire protection in joints.

Acoustic Intumescent Sealant is third party accredited through IFC and Certifire.

Product information

Property	Description
Length	1000mm
Width	60mm
Thickness	25mm
Fire Resistance	Up to 4 hours

Installation

The product is cut to length to suit the width of the cable tray or electrical trunking to be fire stopped. For example, with 100mm x 50mm electrical trunking the product would be cut into sections of 100mm long.

Multi-Cable Firestop is then laid on top of the cable runs orientating the product so that the 60mm width lies across the thickness of the wall (Figure 1) or the depth of the floor slab (Figure 2).

Multi-Cable Firestop is then layered to fill the complete void depth of the electric trunking or the cable tray. Ensure electrical trunking lids are fixed back after installing the product.



Figure 1

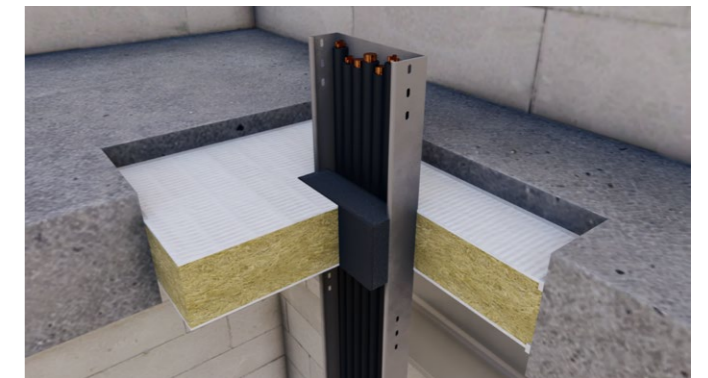
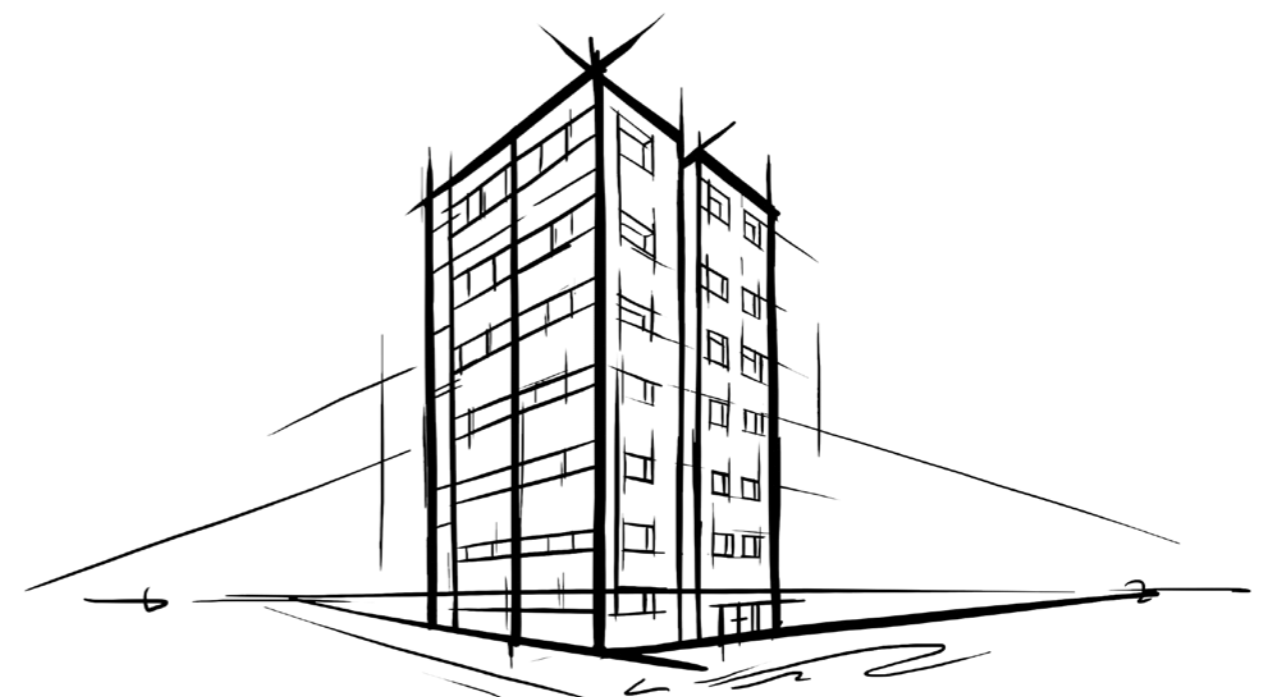


Figure 2



Specification clauses

FIREPRO Multi-Cable Firestop is associated with the following NBS clauses:

P12 Fire stopping systems

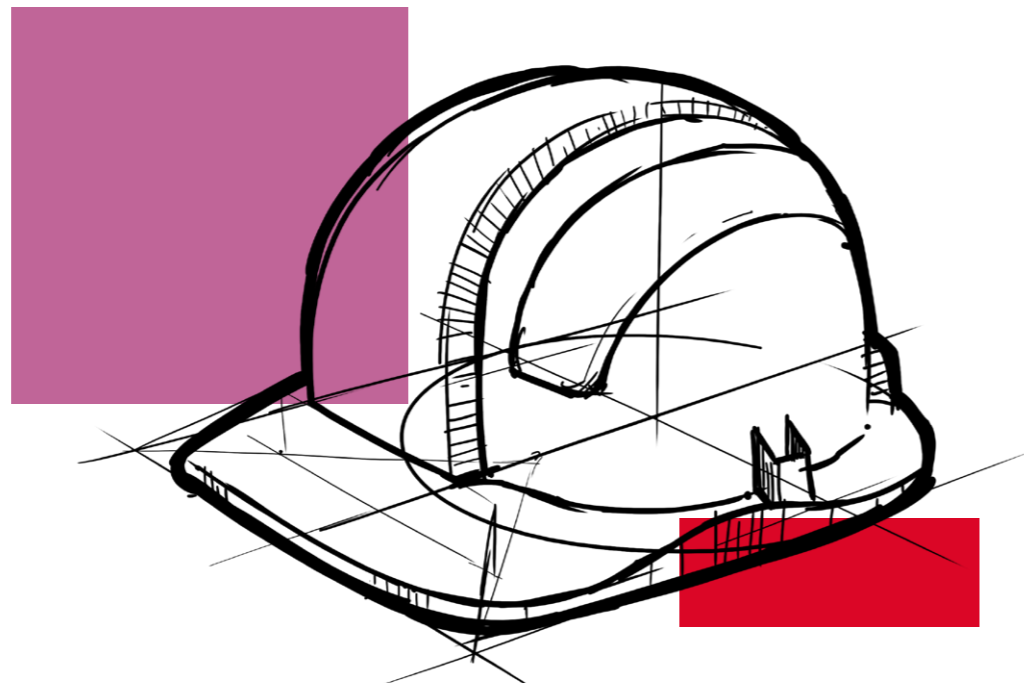
- 330 Fire stop laminate

Disclaimers

This product should only be utilised for applications as outlined in the relevant ROCKWOOL product datasheet and in accordance with the relevant ROCKWOOL Fire Resistance Testing. Additionally, the product must be installed in accordance with the current ROCKWOOL guidelines. For further information please visit www.rockwool.co.uk or contact our Technical Solutions Team on 01656 868490.

Supporting Information

For further information relating to any aspect of the FirePro range, please refer to the applicable ROCKWOOL standard details at www.rockwool.co.uk or contact the ROCKWOOL technical solution team on 01656 868490 or technical.solutions@rockwool.co.uk.



Sustainability

As an environmentally conscious company, ROCKWOOL promotes the sustainable production and use of insulation and is committed to a continuous process of environmental improvement.

All ROCKWOOL products provide outstanding thermal protection as well as four added benefits:



Fire resistance



Acoustic comfort



Sustainable materials



Durability

Health & Safety

The safety of ROCKWOOL stone wool is confirmed by current UK and Republic of Ireland health & safety regulations and EU directive 97/69/EC: ROCKWOOL fibres are not classified as a possible human carcinogen.

A Material Safety Data Sheet is available and can be downloaded from www.rockwool.co.uk to assist in the preparation of risk assessments, as required by the Control of Substances Hazardous to Health Regulations (COSHH).

Environment

Made from a renewable and plentiful naturally occurring resource, ROCKWOOL insulation saves fuel costs and energy in use and relies on trapped air for its thermal properties.

ROCKWOOL insulation does not contain (and has never contained) gases that have ozone depletion potential (ODP) or global warming potential (GWP).

ROCKWOOL is approximately 97% recyclable. For waste ROCKWOOL material that may be generated during installation or at end of life, we are happy to discuss the individual requirements of contractors and users considering returning these materials to our factory for recycling.



Interested?

For further information, contact the Technical Solutions Team on 01656 868490 or email technical.solutions@rockwool.co.uk. Visit www.rockwool.co.uk to view our complete range of products and services.

Copyright ROCKWOOL September 2018.

The ROCKWOOL Trademark

ROCKWOOL® - our trademark

The ROCKWOOL trademark was initially registered in Denmark as a logo mark back in 1936. In 1937, it was accompanied with a word mark registration; a registration which is now extended to more than 60 countries around the world.

The ROCKWOOL trademark is one of the largest assets in the ROCKWOOL Group, and thus well protected and defended by us throughout the world.

If you require permission to use the ROCKWOOL logo for your business, advertising or promotion. You must apply for a Trade Mark Usage Agreement. To apply, write to:
marketcom@rockwool.com.

Trademarks

The following are registered trademarks of the ROCKWOOL Group:

ROCKWOOL®

ROCKCLOSE®

RAINSCREEN DUO SLAB®

HARDROCK®

ROCKFLOOR®

FLEXI®

BEAMCLAD®

FIREPRO®

Disclaimer

ROCKWOOL Limited reserves the right to alter or amend the specification of products without notice as our policy is one of constant improvement. The information contained in this brochure is believed to be correct at the date of publication. Whilst ROCKWOOL will endeavour to keep its publications up to date, readers will appreciate that between publications there may be pertinent changes in the law, or other developments affecting the accuracy of the information contained in this brochure. The applications referred to within the brochure do not necessarily represent an exhaustive list of applications. ROCKWOOL Limited does not accept responsibility for the consequences of using ROCKWOOL in applications different from those described within this brochure. Expert advice should be sought where such different applications are contemplated, or where the extent of any listed application is in doubt.

© ROCKWOOL 2018. All rights reserved.

Photography and Illustrations

The product illustrations are the property of ROCKWOOL Ltd and have been created for indicative purposes only.

Unless indicated below, the photography and illustrations used in this guide are the property of ROCKWOOL Limited. We reserve all rights to the usage of these images.

If you require permission to use ROCKWOOL images, you must apply for a Usage Agreement. To apply, write to:
marketcom@rockwool.com.

Notes

Notes

Notes

September 2018

ROCKWOOL Limited

Pencoed
Bridgend
CF35 6NY

Tel: 01656 862 621

info@rockwool.co.uk

rockwool.co.uk

