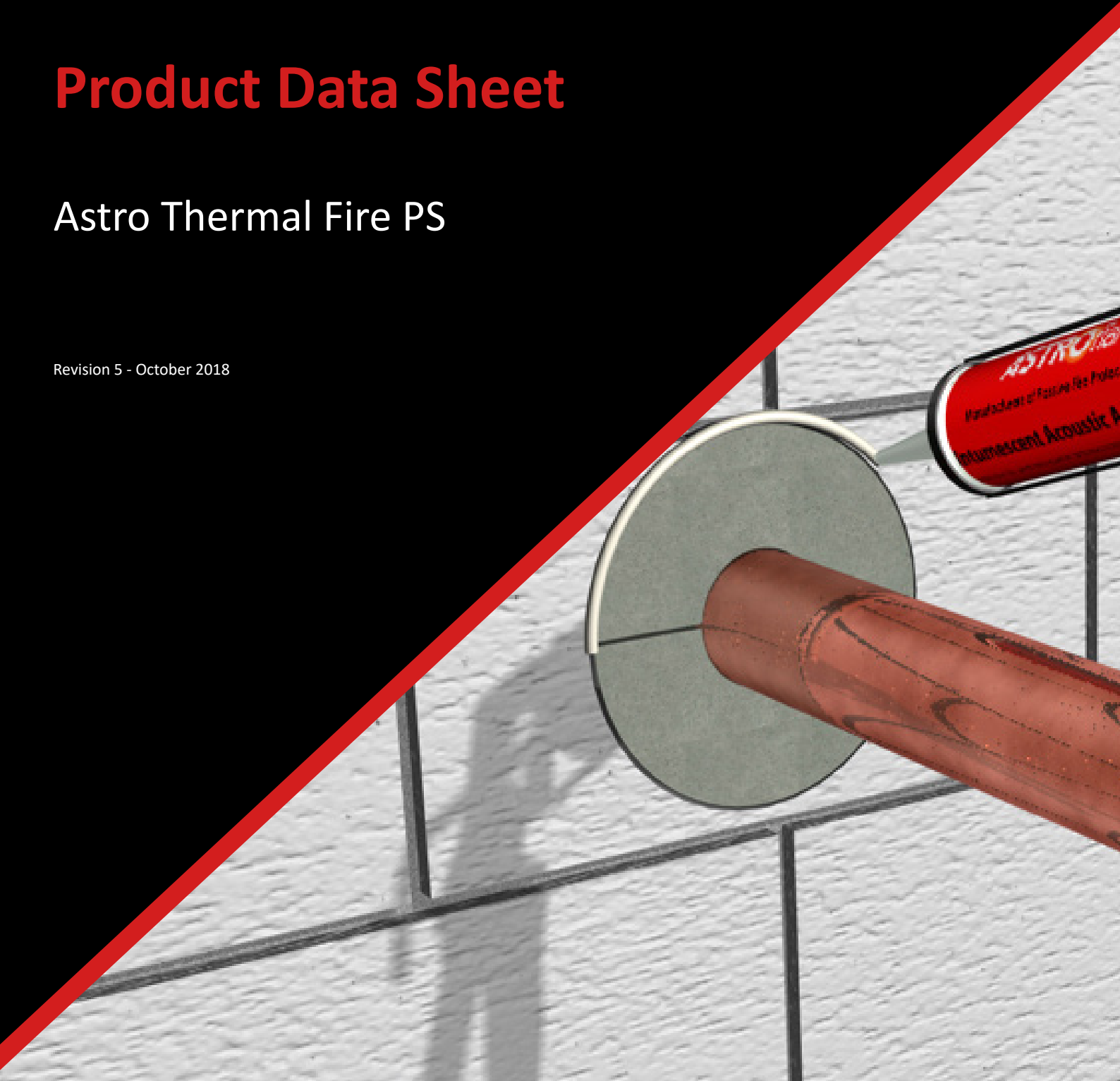


# Product Data Sheet

## Astro Thermal Fire PS

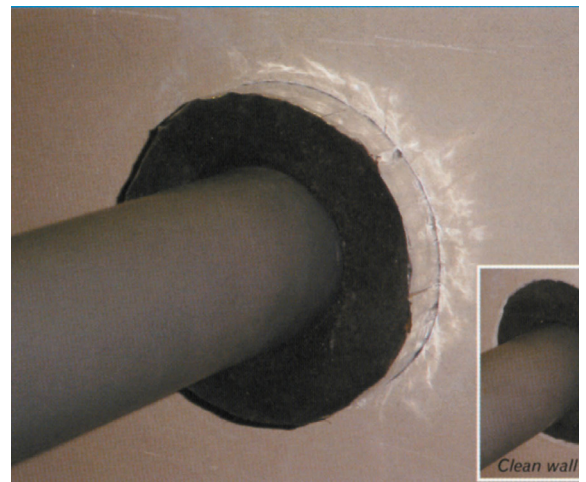
Revision 5 - October 2018



## Astro Thermal Fire PS

### Thermal Fire Pipe Sleeve

- CE Marked.
- Suitable for fire protecting a wide range of plastic and metal pipes.
- Tested to BS476: Part 20
- Tested to BS EN 1366-3
- 2 Hours Fire Rating
- Maintains thermal insulation for the pipe
- For use through a wide range of fire partition walls and floors.
- Allows for thermal movement of pipe
- No additional metal sleeving or lining out of the partition aperture required
- Cost effective, can be cut to length



#### Product Description

A high percentage of the steel, copper and plastic pipes found in commercial and domestic buildings will penetrate through fire rated constructions such as ceilings, floors and walls. Once a hole is made in a fire rated construction for the passage of pipes or services the integrity of the compartment is compromised.

To solve this problem Astroflame have developed Astro Thermal Fire Pipe Sleeve, which reinstates the fire rating of the construction and prevents fire spreading from one compartment to another. It also protects copper pipes from cement erosion.

The sleeve is a cost effective product for the fire stopping of pipe penetrations, e.g. plumbing pipe and metallic pipes, whilst maintaining similar thermal and acoustic properties as standard mineral fibre insulation. These properties ensure compliance to water bye laws and building regulations for cold and hot water pipes and heating systems.

In a fire situation the sleeve expands to fill the available space between the pipe and the penetration. In the case of plastic pipes the sleeve will crush and close off the pipe forming a solid char and preventing the passage of fire and smoke to the adjacent compartment.

Tested in Plasterboard Partition, Mineral Fibre Batt, Solid Walls and Floors.

 1224
Astroflame Fireseals Ltd Unit 8 The I O Centre Stephenson Road Segensworth, Fareham Hampshire, PO15 5RU 14 1224-CPR-0555
ETA-14/0017 ETAG 026 - Part 2 ASTRO THERMAL FIRE PS ASTRO THERMAL FIRE PS+ "see ETA-14/0017 for relevant characteristics"

**Product Availability**

Tested on the following pipe sizes to BS 476 Part 20 and BS EN 1366-3 for up to 2 hours.

BS 476 part 20		
COPPER	Pipe Size 12mm - 160mm	120 mins
STAINLESS STEEL	Pipe Size 15mm - 160mm	120 mins
MILD STEEL	Pipe Size 15mm - 165mm	120 mins
CAST IRON	Pipe Size 15mm- 160mm	120 mins
PVC	Pipe Size 55mm- 110mm	120 mins
PVC	Pipe Size 160mm	90 mins
POLYBUTYLENE	Pipe Size 12mm - 28mm	120 mins
HDPE	Pipe Size 15mm - 160mm	120 mins
EN 1366-3		
METAL	Pipe Size 15mm - 158mm	EI 120 Wall
METAL	Pipe Size 159mm	E120 EI30 Wall
PVC	Pipe Size 43mm - 160mm	EI 120 min wall & floor
HDPE	Pipe Size 40mm - 110mm	120 min wall & floor
HDPE	Pipe Size 160mm	EI 90 wall / EI 120 floor

All sleeves have been tested with a 25mm nominal wall thickness. Sleeves have been tested cut flush to the wall for metal pipes only and floor for metal and plastic pipes. Sleeves have also been tested in walls, for plastic pipes, leaving 25mm exposed for connection to standard pipe insulation.

The sleeve is simple to install, easy to cut and one sleeve can replace two collars. For metal pipes the sleeve may also be fitted flush to the wall for a clean line solution.

Pipe Material	Diameter	Blockwork Wall	Solid Floor	Mineral batt	Plasterboard Wall
COPPER	Pipe Size 15mm - 160mm	•	•		•
CAST IRON	Pipe Size 15mm - 160mm	•			•
MILD STEEL	Pipe Size 15mm - 160mm	•	•		•
STAINLESS STEEL	Pipe Size 15mm - 160mm	•	•		•
POLYBUTYLENE	Pipe Size 12mm	•	•	•	•
POLYBUTYLENE	Pipe Size 28mm	•	•	•	•
PVC	Pipe Size 55mm - 110mm	•	•	•	•
PVC	Pipe Size 160mm	•	•		•
PVC-U	Pipe Size 15mm - 160mm	•	•		•
HDPE	Pipe Size 15mm - 160mm	•*	•		•*

**\* HDPE 160mm limited to EI90**

For specific details of approved pipe materials, pipe thickness and substrates check with Astroflame Technical Team

**Product Availability**

Thermal Pipe Sleeve Length 300mm. Wall thickness 27mm.

Product Code	Product Description	Diameter
AFIPS17/2E	Astro Thermal Fire Pipe Sleeve 17mm	17mm
AFIPS21/2E	Astro Thermal Fire Pipe Sleeve 21mm	21mm
AFIPS27/2E	Astro Thermal Fire Pipe Sleeve 27mm	27mm
AFIPS34/2E	Astro Thermal Fire Pipe Sleeve 34mm	34mm
AFIPS42/2E	Astro Thermal Fire Pipe Sleeve 42mm	43mm
AFIPS48/2E	Astro Thermal Fire Pipe Sleeve 48mm	48mm
AFIPS54/2E	Astro Thermal Fire Pipe Sleeve 54mm	54mm
AFIPS60/2E	Astro Thermal Fire Pipe Sleeve 60mm	60mm
AFIPS67/2E	Astro Thermal Fire Pipe Sleeve 67mm	67mm
AFIPS76/2E	Astro Thermal Fire Pipe Sleeve 76mm	76mm
AFIPS80/2E	Astro Thermal Fire Pipe Sleeve 80mm	80mm
AFIPS89/2E	Astro Thermal Fire Pipe Sleeve 89mm	89mm
AFIPS102/2E	Astro Thermal Fire Pipe Sleeve 102mm	102mm
AFIPS108/2E	Astro Thermal Fire Pipe Sleeve 108mm	108mm
AFIPS114/2E	Astro Thermal Fire Pipe Sleeve 114mm	114mm
AFIPS127/2E	Astro Thermal Fire Pipe Sleeve 127mm	127mm
AFIPS140/2E	Astro Thermal Fire Pipe Sleeve 140mm	140mm
AFIPS159/2E	Astro Thermal Fire Pipe Sleeve 159mm	159mm
AFIPS169/2E	Astro Thermal Fire Pipe Sleeve 169mm	169mm

**To Order & Specify**

Please contact us and quote the following information - Quantity / Product Code / Product Description / Size  
 Typical example:- 10 / AFIPS21/2E / Astro Thermal Pipe Sleeve 21mm / 21mm

>> Tel: [01329 844 500](tel:01329844500) or >> Email: [sales@astroflame.com](mailto:sales@astroflame.com)

**Installation**

Please see Install Sheet - This can be requested from our sales team T: [01329 844 500](tel:01329844500)  
 or E: [sales@astroflame.com](mailto:sales@astroflame.com)

**Health and Safety**

Please see (SDS) Safety Data sheet - This can be requested from our sales team T: [01329 844 500](tel:01329844500)  
 or E: [sales@astroflame.com](mailto:sales@astroflame.com)

As part of our policy of ongoing improvements, we reserve the right to modify, alter or change product specifications without giving notice. Product illustrations are representations only. All information contained in this document is provided for guidance only, and as ASTROFLAME FIRESEALS LTD has no control over the installation methods of the products, or of the prevailing site conditions, no warranties expressed or implied are intended to be given as to the actual performance of the products mentioned or referred to, and no liability whatsoever will be accepted for any loss, damage or injury arising from the use of the information given of products mentioned or referred to herein.

The above information to the best of our knowledge is true and accurate and based upon current test data and is supplied for your guidance only. Customers should satisfy themselves to the suitability of the product in its intended use and no guarantee is given or implied since the conditions of actual use are beyond our control. ASTROflame (Fireseals) Ltd, disclaim any liability for loss, damage or other expense arising from the use of information, data or products mentioned or referred to and reserve the right to change any details or specifications without notice.